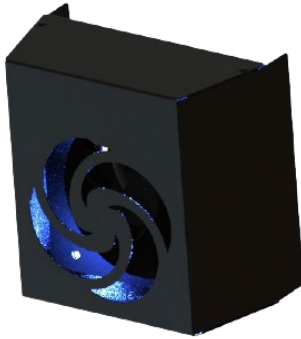


# BSE BA-350 Product Specifications



## BSE BA-350 Product Summary



The universal "plug and play" design allows for numerous types of applications and installation configurations. The "Plug and Play" concentrated Biogenic Ionization units can be installed in a vertical or horizontal application in the most optimum location of a room depending on the space use. The product is light weight and easily transportable. Simply plug in the unit, adjust the fan and millions of nature's clean air ions continuously clean the air you breathe with our engineered Ion flow technology design for a total room air entrainment coverage.

## Specifications

Unit Dimensions	Length 7.26", Width 4", Height 7.0"
Material Casing	Steel
Cord Length	10 Feet
Fan	Tube Axial w/ Shaded-Pole Construction
Airflow Capacity	115 CFM
Static Pressure	3.73 Pa (0.38 mm H2O)
Sound Output	45dB
Max Speed	3,100 RPM
Fan Bearings	Lubricated Sleeve Bearing System
Direction of Rotation	Counter-clockwise Front Facing
Weight	10.6 lbs.
Maximum Operating Temperature	160° F (70°C)
Electrical: Voltage Input	85 - 125V AC
Power Consumption	22-Watt
Frequency	50/60 Hz
Current	1.24A
Power Plug	NEMA 3-18 Type A
Total Mean Ion Output cm <sup>3</sup> (Max Speed)	@2ft = 734,000 ions, @5ft = 444,000 ions @10ft = 59,000 ions, @15ft = 26,000 ions
Needle Configuration	Brush Type
Certifications	UL 2998, UL 867 ETL Listed, conforms to UL Standard 507 Standard C22.2 No113, Fan Blade UL 94V

Academic Representative



Technology Education Concepts  
www.TECedu.com | 800-338-2238

2246 Palmer Drive, Schaumburg, IL 60173  
For more information contact  
www.bseseales.com  
866-360-5675  
sales@bseseales.com